

WPS2900 Series

Mass Notification Warning Systems



Audio/Visual Devices

General

The most effective way to warn the public is to issue a siren warning and follow it with a clear, deliberate and powerful voice message. This two step approach, *alert* and *inform*, will eliminate confusion, restore order and most importantly, save lives.

The Whelen WPS2900 Series accomplishes this in two ways. One is to alert, the other is to inform through omni-directional voice and siren warning.

The WPS2900 Series delivers voice warning and broadcasting of unequalled clarity at uniform power levels (+/- 1dB) throughout 360°.

Features

- Choice of one to ten omni-directional speaker cells assembled in a vertical column.
- Ten models, 109dBc to 129 dBc @ 100'.
- All WPS2900 speaker cells include high efficiency 400 watt EZ-PULL™ speaker drivers.
- 50' cable included.
- Pole top mounting bracket included.
- Two or three compartment natural finish aluminum cabinet.
- Battery powered, minimum of 30 minutes of full power output.
- AC temperature compensated at 10 amp battery charger.
- Local controls or remote controls.
- Power amplifiers.
- Electronic siren control.
- Tone generator.
- Timer.
- Local control push buttons.
- Battery switch.

System Options

SBC280: Solar power. (*Solar power options include 2-80 watt panels, mounting bracket and regulator.*)

WPSBATT: Set of two Delco S2000 or Interstate Workaholic 31-MHD batteries.

WPSNCMIC: Noise cancelling microphone.

SI TEST®

Only Whelen's diagnostic silent test, SI TEST, fully exercises the siren system without disturbing the public. Diagnostic SI TEST information including the following:

- AC power ON/OFF
- DC power at operational levels
- Partial speaker driver/power amplifier operation
- Full speaker driver/power amplifier operation



Specifications

Battery Charger Input: 120VAC, 60Hz, 7A fuse (240VAC, 50/60Hz available).

Battery Charger Output: 28VDC, 10A (Nominal).

Batteries: (2) 12V, 115AH Lead Calcium (WPS2901, WPS2902, WPS2903, WPS2904, WPS2905); (4) 12V, 115AH Lead Calcium (WPS2906, WPS2907, WPS2908, WPS2909, WPS2910).

Standby Current: 135mA, 24VDC.

Cabinets: Two compartment (Type II) natural finish aluminum cabinet (WPS2901, WPS2902, WPS2903, WPS2904, WPS2905); Three compartment (Type III) natural finish aluminum cabinet (WPS2906, WPS2907, WPS2908, WPS2909, WPS2910).

WPS2900 Series Performance Chart

Models	SPL @ 100'*	70dB (feet)	60dB (feet)
WPS2901	109	1,500	3,000
WPS2902	115	2,400	4,800
WPS2903	119	3,100	6,200
WPS2904	121	3,500	7,000
WPS2905	123	4,200	8,400
WPS2906	125	4,800	9,600
WPS2907	126	5,100	10,200
WPS2908	127	5,400	10,800
WPS2909	128	5,800	11,600
WPS2910	129	6,100	12,200

***NOTE:** *All 100' performance levels listed represent repeatable results with +/- 1dB to stated levels under free field conditions when warning systems are maintained to factory specification and tested according to published guidelines.

Ordering Information

OMNI-DIRECTIONAL SPEAKERS

WPS2901: Omni-directional speaker, 1 cell. *Operating Current:* 23A, 24VDC. *Power Amplifier Output Power (Voice):* 500 Watts.

WPS2902: Omni-directional speaker, 2 cells. *Operating Current:* 45A, 24VDC. *Power Amplifier Output Power (Voice):* 1,000 Watts.

WPS2903: Omni-directional speaker, 3 cells. *Operating Current:* 67A, 24VDC. *Power Amplifier Output Power (Voice):* 1,500 Watts.

WPS2904: Omni-directional speaker, 4 cells. *Operating Current:* 67A, 24VDC. *Power Amplifier Output Power (Voice):* 2,000 Watts.

WPS2905: Omni-directional speaker, 5 cells. *Operating Current:* 111A, 24VDC. *Power Amplifier Output Power (Voice):* 2,500 Watts.

WPS2906: Omni-directional speaker, 6 cells. *Operating Current:* 133A, 24VDC. *Power Amplifier Output Power (Voice):* 3,000 Watts.

WPS2907: Omni-directional speaker, 7 cells. *Operating Current:* 155A, 24VDC. *Power Amplifier Output Power (Voice):* 3,500 Watts.

WPS2908: Omni-directional speaker, 8 cells. *Operating Current:* 177A, 24VDC. *Power Amplifier Output Power (Voice):* 4,000 Watts.

WPS2909: Omni-directional speaker, 9 cells. *Operating Current:* 199A, 24VDC. *Power Amplifier Output Power (Voice):* 4,500 Watts.

WPS2910: Omni-directional speaker, 10 cells. *Operating Current:* 221A, 24VDC. *Power Amplifier Output Power (Voice):* 5,000 Watts.

WHELEN CONTROLS AND ACCESSORIES

AUXCS: Full function auxiliary/status board for contact closure activation (two way).

STATUS: Cabinet window LED status indicator.

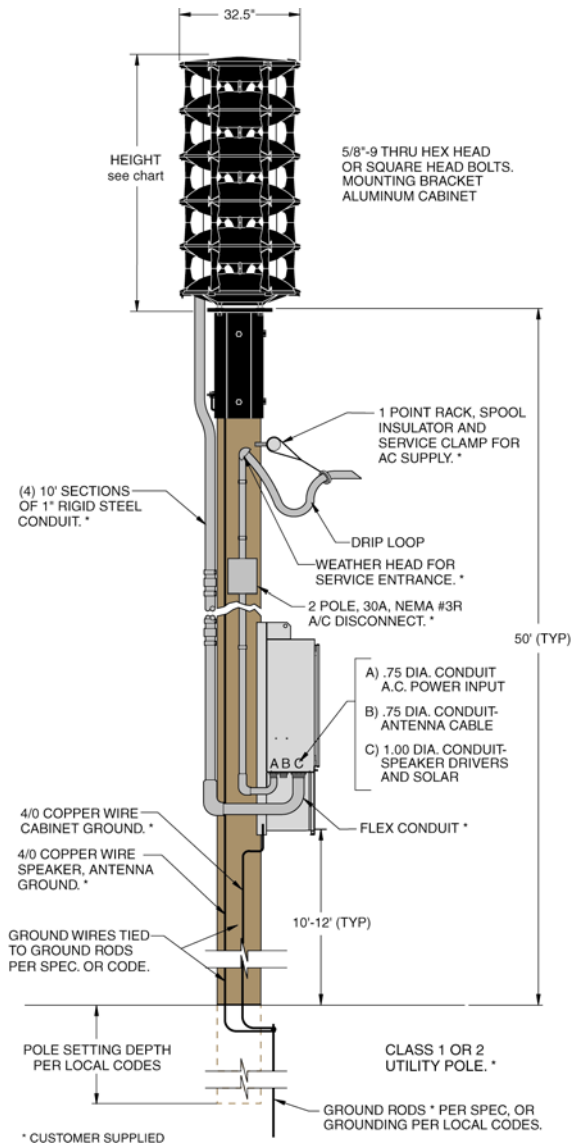
INTRU: Intrusion alarm for Whelen outdoor speaker cabinets.

WPSNCMIC: Series noise cancelling microphone includes local microphone input harness.

WPSBATT: One pair Whelen approved batteries.

SCWPS: Strobe controller, WPS2900 mounting plate for ISB24 beacon, hardware and harnessing. ISB24 strobe sold separately.

SBC280: Solar power system, two 80 watt panels, mounting bracket and regulator. Price reflects deletion of AC battery charger. Option must be purchased at time of initial order.



SI TEST® is a registered trademarks and EZ-PULL™ is a trademark of Whelen Engineering Company, inc. NOTIFIER® is a registered trademark of Honeywell International Inc. ©2008 by Honeywell International Inc. All rights reserved. Unauthorized use of this document is strictly prohibited.



This document is not intended to be used for installation purposes.
We try to keep our product information up-to-date and accurate.
We cannot cover all specific applications or anticipate all requirements.
All specifications are subject to change without notice.



Made in the U.S. A.

For more information, contact Notifier. Phone: (203) 484-7161, FAX: (203) 484-7118.
www.notifier.com